



xOVERTIME™

➤ xMetrics

xMetrics is a simple and powerful solution to help companies manage Key Performance Indicators (KPI's) associated with:

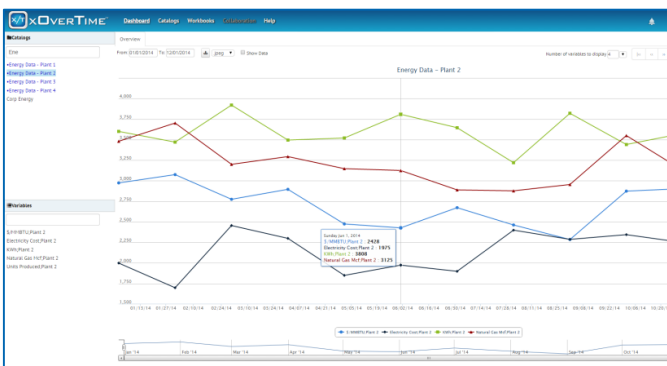
- Internal Reporting across the organization: Accounting, Finance, Engineering, Health, Safety, Environmental, Manufacturing, Energy, Supply Chain, Sales, etc.
- External Reporting for the purpose of: Financial Audits, Supplier Score Cards, Sustainability, Regulatory Agencies, etc.

Easy Source Data Collection

xMetrics has a cloud database that can collect data from other systems and spreadsheets. Users can continue to use their familiar Microsoft Excel® spreadsheets to upload data to xMetrics. Staff can be notified when source data has been entered.

Web Dashboard to Verify and Validate Data

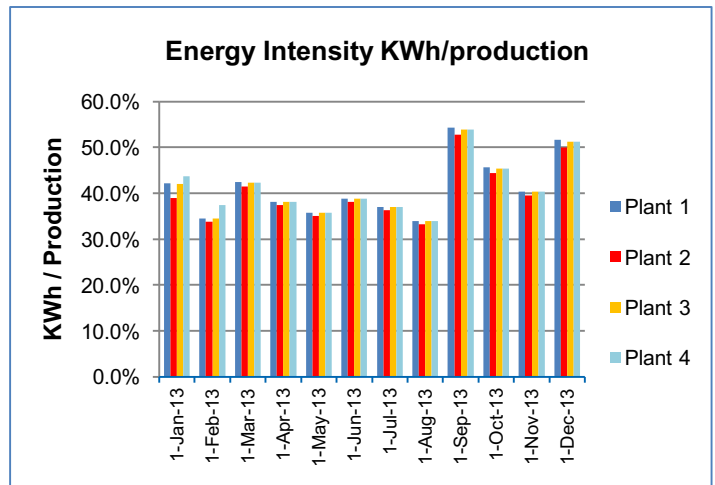
The xMetrics dashboard makes it easy for a company to review and analyze data that has been collected. Trends and deviations are easy to identify.



Leverage Staff Experience with Excel

There is no reason for staff to learn a new data calculation tool. With xMetrics users leverage their experience with Excel for input forms, calculations, reporting and charting.

Simple, powerful, and intuitive Metric management and reporting



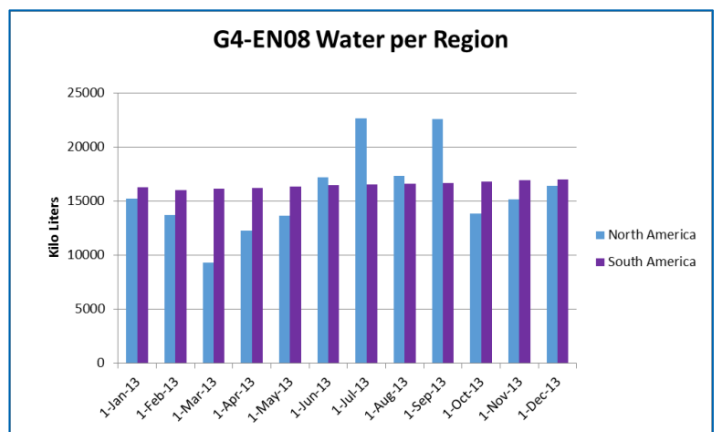
Why Choose xMetrics?

Easiest to Use – Leveraging Excel, there is no need to learn another calculation and reporting tool, making the solution easy to use and maintain.

Lowest Cost – Because your company likely uses Excel, training and operation costs are reduced. The SaaS subscription is very economical in relation to the value xMetrics provides.

Best Technology – xMetrics leverages Excel and the xOverTime cloud database technology. Excel is proven for processing analytics, charting, and reporting. xMetrics provides a 24x7 cloud database with analysis, data governance and collaboration capabilities.

Leverage Existing Analysis and Reporting Resources – It's likely your company is already collecting and reporting on data via Excel. Those existing resources can be adapted within xMetrics.



Compare Actual to Forecast

An xMetrics implementation can track actual results to prior forecasts. Deviations can be flagged in performance reports.

GRI, Regulatory and Corporate Methodologies

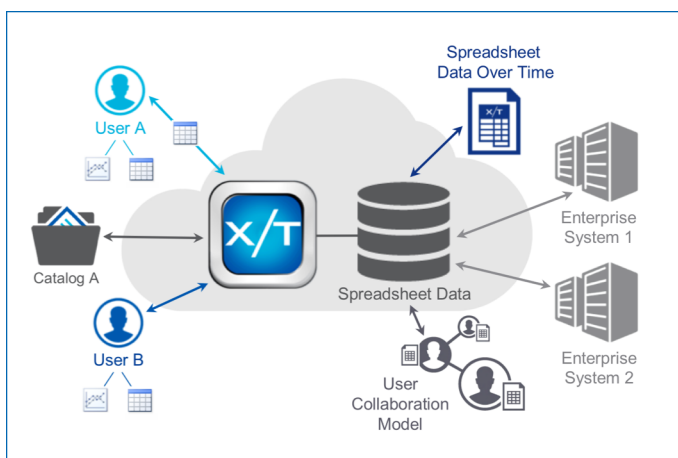
xMetrics can be used to support standard protocols such as those by the Global Reporting Initiative as well as reports demanded by regulatory agencies and company management. Results from different methodologies can be separately stored and tracked.

Promote and Control Collaboration

Business processes associated with Metrics collection and publishing work best with strong collaboration environments. xMetrics promote collaboration through data sharing and notification capabilities. Users have complete control of who has access to the data that they own.

Integration with Corporate Systems

xMetrics can tightly integrate with other corporate systems using a complete Application Programming Interface (API) made available by xOverTime.



Security, Administration, and Data Governance

xMetrics is designed for enterprise use with strong data governance principles. xOverTime's information security policies follow ISO 27000 standards.

Indicator	Description	Disclosure Requirements	UOM	Value	Goal	Achievement	Comments
G4-EN15	Materials used by weight or volume	a. Report the total weight or volume of materials that are used to produce and package the organization's primary products and services during the reporting period, by: • Non-renewable materials used • Renewable materials used	tonnes	14025	16000	9.0%	Exceeded Goal to reduce by: 9%
G4-EN16	Percentage of materials used that are recycled input materials	a. Report the percentage of recycled input materials used to manufacture the organization's primary products and services.	tonnes	4765	5000	6.0%	Missed Goal to reduce by: 6%
G4-EN17	Energy consumption within the organization	a. Report total fuel consumption from non-renewable sources in joules or multiples, including fuel types used. b. Report total fuel consumption from renewable fuel sources in joules or multiples, including fuel types used. c. Report in joules, with hours or multiples, the total: • Electricity consumption • Heating consumption • Cooling consumption • Steam consumption d. Report in joules, with hours or multiples, the total: • Electricity sold • Heating sold • Cooling sold • Steam sold e. Report total energy consumption in joules or multiples. f. Report standards, methodologies, and assumptions used. g. Report the source of the conversion factors used.	MWh	277110	600000	94.5%	Exceeded Goal to reduce by: 95%
G4-EN18	Energy consumption outside of the organization	a. Report energy consumed outside of the organization, in joules or multiples. b. Report standards, methodologies, and assumptions used. c. Report the source of the conversion factors used. d. Report the total volume of water withdrawn from the following GRI Corporate Topics - GRI 303: water - Water Metrics - Energy Consumption	MWh	100000	120000	16.6%	Exceeded Goal to reduce by: 17%

SaaS Benefits

xMetrics makes use of the xOverTime technology platform which delivers 24x7 availability. Technology updates occur with minimal off-hours downtime. There are no servers to buy and maintain and no software releases to update; therefore, allowing you to focus on results.

Services and Training

Because xMetrics leverages Microsoft Excel, xOverTime is confident customers will quickly be productive. However, given staff time constraints, the xOverTime services team and consulting partners are available to help implement and maintain a solution.

Services include:

- Requirements Assessment
- Solution and Business Process Design
- Data Collection Processes
- System Integration
- Analytics
- Report Generation
- Training

Call +1-844-968-9684 to setup a demo today.

